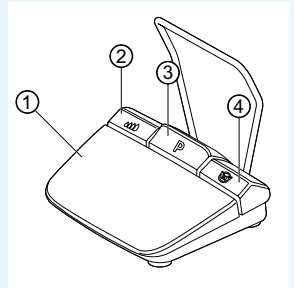


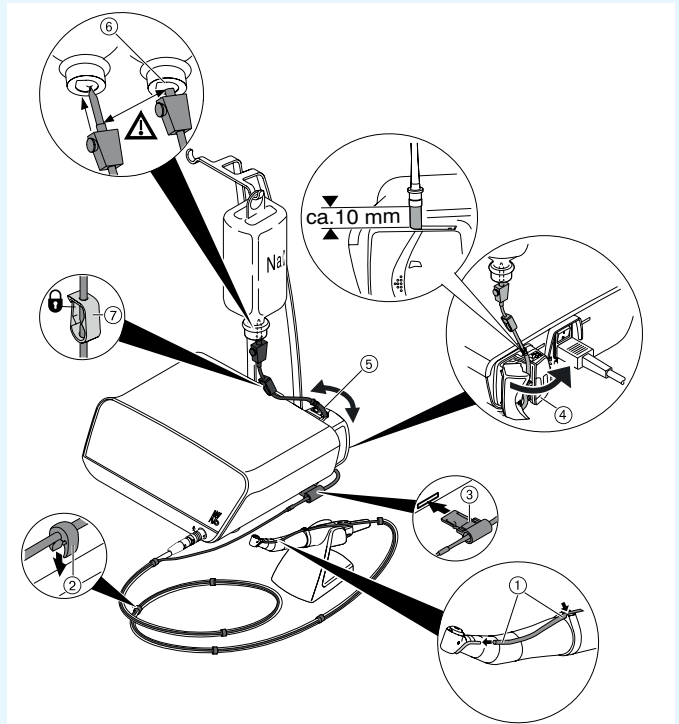
# Short instructions for use

- ① **Speed key:** Start motor / increase speed.
- ② **Coolant key:** 2 operating modes can be set for the coolant key.  
Depending on the set operating mode, the coolant key has the following functions:  
Press briefly - switch coolant flow on/off or  
Press briefly - set the coolant flow from 0 ml/s to 110 ml/s (4 steps).  
Press long - activate the manual rinsing function.
- ③ **Program key:** Press briefly - Program step forward.  
Press long - program step backwards.
- ④ **Direction of motor rotation key:** Set the direction of motor rotation.



## Connecting the hose set

1. Close the hose clamp ⑦.
2. Attach the coolant hose ① to the straight or contra-angle handpiece.
3. Attach clips ② closely to the motor lead.
4. Engage hose adapter ③.
5. Insert hose into pump (approx. 1 cm clearance between connector and pump inlet).
6. Insert insertion needle ⑥.
7. Open the hose clamp ⑦.



**Note**

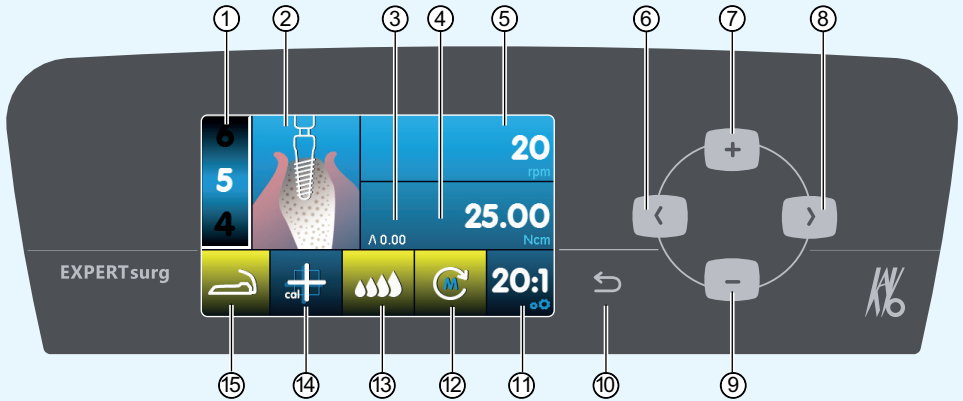
Open the vent at the insertion needle ⑥ only with glass bottles.



**CAUTION**

These brief instructions for use only contain the essential operating functions. It is essential to observe the instructions for use included in the delivery prior to the first start-up or in case of operation by persons who are not familiar with handling this medical device.





- ① Program step  
(1 to max. 10)
- ② Display of activity  
(separately selectable for every single program step)
- ③ Maximum torque achieved
- ④ Torque limit
- ⑤ Speed
- ⑥ Left arrow key
- ⑦ Plus key, increase value
- ⑧ Right arrow key
- ⑨ Minus key, decrease value
- ⑩ Back key  
(press briefly: back)  
(press longer: device settings)
- ⑪ Transmission ratio
- ⑫ Direction of motor rotation
- ⑬ Coolant pump settings
- ⑭ Activation of one-touch calibration  
(for exact determination of speed)
- ⑮ Foot control status indicator

## Change parameter and activity

### Select device setting

Press back key ⑩ briefly to proceed to the selection of program steps.  
Press longer to activate the device settings.

### Selecting parameter or activity

(left arrow key ⑥ or right arrow key ⑧)

### Changing parameter or activity

(plus key ⑦, minus key ⑨ or foot control keys)

Automatic saving on leaving the parameter or the activity.

### Limiting the number of program steps

Select program step after the last chosen program step and select "Flag" activity.

### Cancelling the limitation of program steps

Select program with "Flag" activity and choose new activity.

