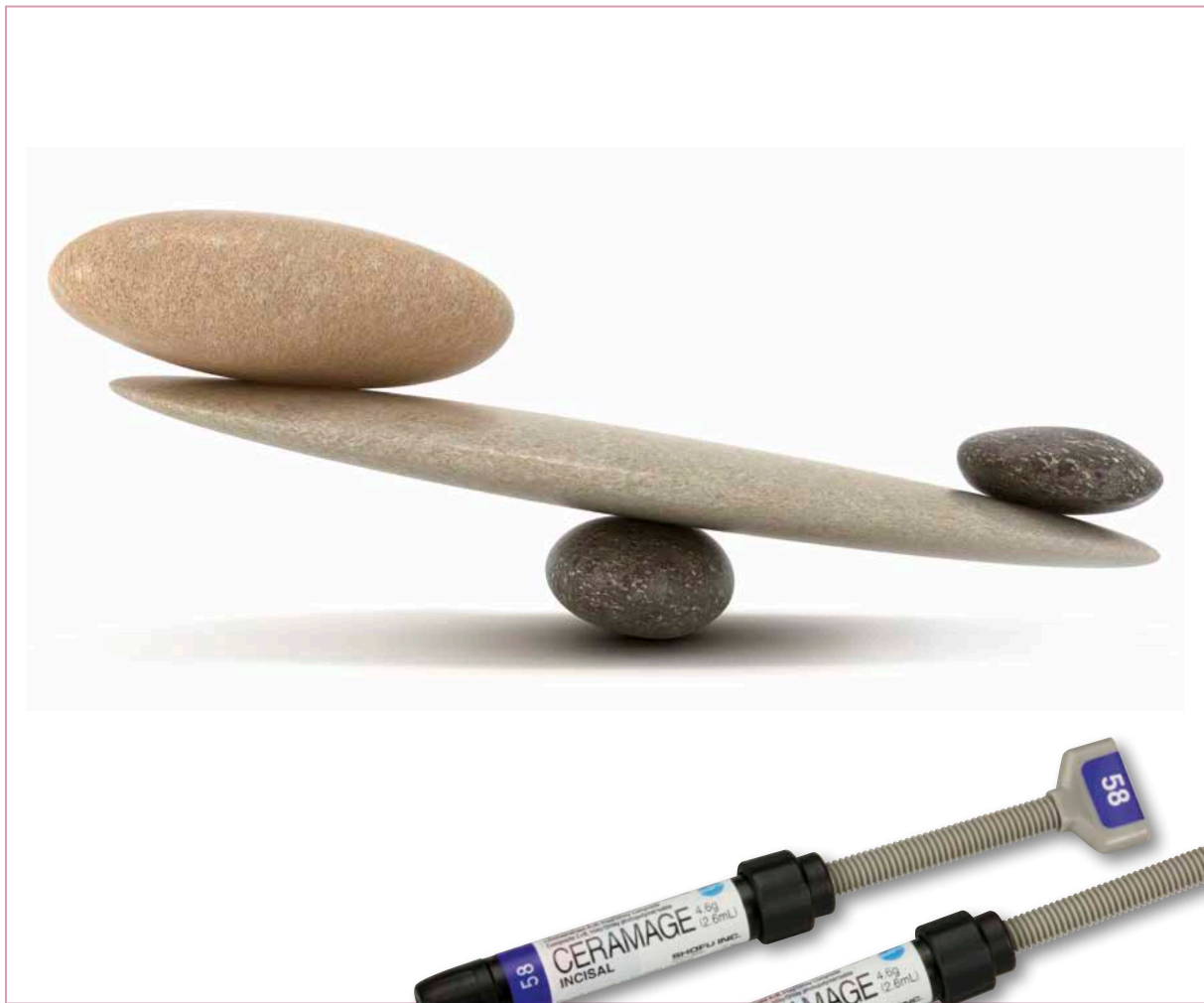


CERAMAGE

Light-Cured Microhybrid Composite



Natural Aesthetics with Well-Balanced Material Properties

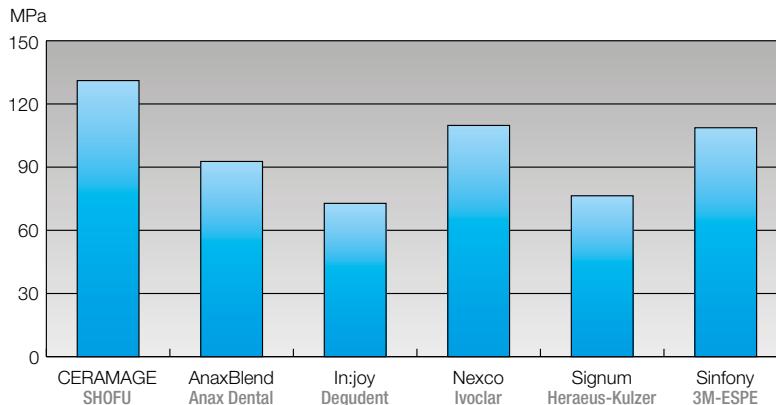
Light-cured, microfilled veneering composites have proved highly successful in clinical practice and are used for a wide variety of applications, thanks to extraordinary material properties and convenient handling.

The appeal of Ceramage lies in its optimised balance between excellent material characteristics and superior aesthetics. The special composition of this micro-hybrid composite system, with a ceramic filler content of more than 70 %, allows you to fabricate all types of aesthetic indirect anterior and posterior restorations using any framework design.

Unlike ceramics, Ceramage absorbs stress, which has a positive effect on the chewing behaviour of patients with implant-supported restorations.

The outstanding flexural strength of Ceramage is achieved exclusively by light-curing. Complicated and time-consuming hardening or heat treatments are not necessary.

Flexural strength after 24-hour storage in distilled water at 37 °C



Source:
Department of Dental Prosthetics
and Materials Science,
University of Jena, Germany,
Dr A. Rzanny, 2013

More Balanced – More Options

- SHOFU Universal Opaque pastes with excellent masking properties and bond strengths to all dental alloys
- Natural aesthetics thanks to tooth-like light transmission
- Abrasion-resistant occlusal veneering
- Wide variety of translucent effect shades and fluorescent paste stains (Lite Art)
- Convenient viscosity and sculptability
- High shade stability
- Very good polishability and resistance to plaque formation

Unrestricted Indications in Anterior and Posterior Teeth

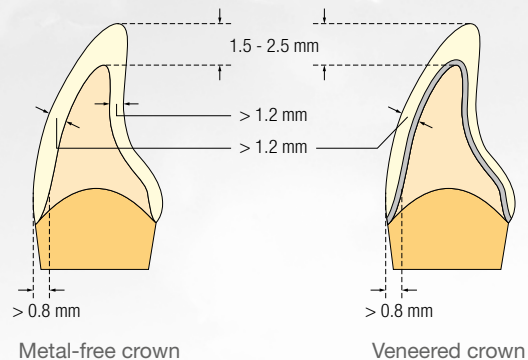
The Ideal Material for any Indication

Ceramage combines natural shade reproduction with extraordinary strength and elasticity and is recommended for both standard and highly stressed (e.g. implant-supported) restorations.

- Fully veneered crowns and bridges
- Fully veneered telescopic and implant-supported restorations
- Precision attachment work
- Occlusal veneering
- Inlays/onlays
- Veneers
- Long-term temporaries
- Modifications to conventional resin teeth

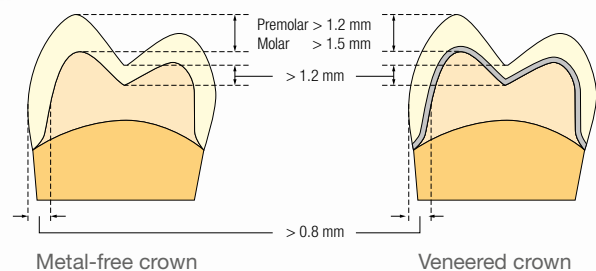
Anterior Restorations

For both metal-free and metal-reinforced anterior restorations, recommended preparation margins are a rounded shoulder on the labial aspect and a distinct chamfer on the lingual aspect. Total wall thicknesses should be no less than 1.2 mm.



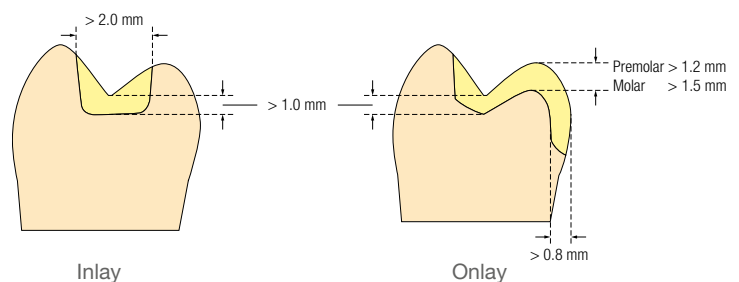
Posterior Restorations

In posterior restorations, a clearly defined shoulder preparation with a rounded chamfer is a particularly important prerequisite for adequate stress absorption. Walls of metal frameworks should be no thinner than 0.3 mm.



Inlays / Onlays

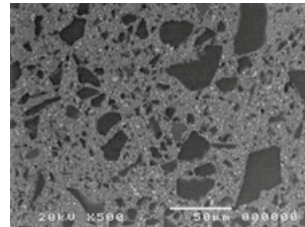
For metal-free inlays or onlays, a box preparation with margins located outside the antagonistic contacts is recommended.



Convincingly Different

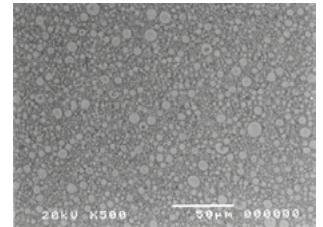
Ceramage offers more than conventional veneering composite systems: Thanks to the homogeneous structure of its inorganic and organic microfillers (< 1 µm), Ceramage features ceramic-like properties, well-balanced hardness and strength and a reliable bond to frameworks.

Conventional composite



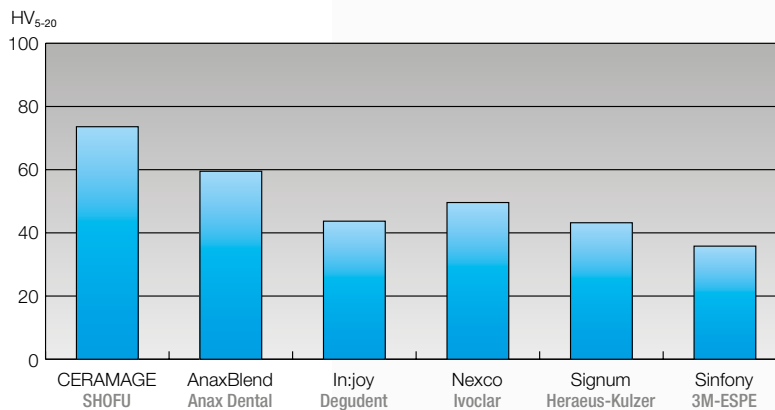
Conventional composites are characterised by an uneven distribution of the glass filler in the resin matrix.

CERAMAGE



Ceramage features a homogeneous microstructure, which gives it ceramic-like properties.

Vickers hardness after 24-hour storage in distilled water at 37 °C

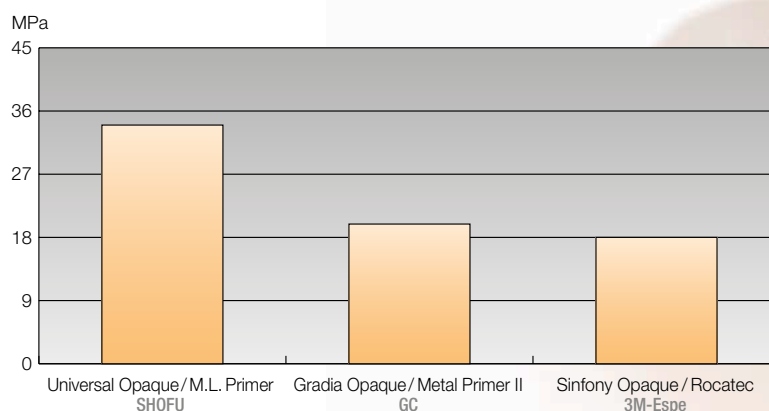


Source:
Department of Dental Prosthetics
and Materials Science,
University of Jena, Germany,
Dr A. Rzanny, 2013

SHOFU Universal Opaque – Reliable Bond to any Dental Alloy

The SHOFU Universal Opaque system forms a perfect symbiosis with SHOFU Universal Primer, for reliable bonds to all dental alloys, zirconia and alumina. These bonds are resistant to hydrolysis and thermal stress in the oral environment.

Compressive shear bond strength to a low-precious alloy (AuroLloyd KF) after 25,000 thermocycles. SHOFU Universal Primer exceeds the bond strengths of M.L. Primer according to SHOFU's measuring method.

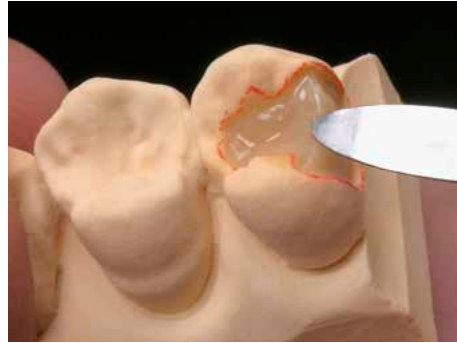


Source:
Department of Dental Prosthetics
and Materials Science,
University of Jena, Germany,
Dr A. Rzanny, 2013

Excellent Handling – Wide Variety of Effects

Inlays / Onlays

The special structure and extraordinary composition of Ceramage ensure controlled application and sculpting, even of small anatomical details. This makes the fabrication of metal-free inlays and onlays easy and quick.



Before



After

Telescopic and Implant-Supported Restorations

Thanks to the natural shade match of the Ceramage dentine and opalescent incisal shades, even a basic layering technique allows you to fabricate removable and fixed restorations with a very harmonious appearance.

There is no limit to creativity and experience when using the versatile translucent and effect shades available in various pasty consistencies.

In prosthetic work, the combination of Ceramage with Ceramage Flowable or Ceramage UP helps you to come closer to the natural original than ever.



Implant restoration

Making Red & White Aesthetics ...

The natural appearance of combined telescopic and implant-supported restorations is decisively influenced by the harmonious design and shading of red and white aesthetics.

The supplementary Ceramage Gum materials have the same basis as the tooth-coloured components of the well-proven Ceramage microhybrid composite system.

They mimic natural gingiva colours and effects, offering unlimited options for the restoration of reduced or missing gingival tissues.



Indications

- Removable telescopic / implant-supported restorations
- Metal-reinforced and metal-free CAD/CAM restorations
- Permanent composite-veneered restorations
- Long-term temporaries
- Removable partial dentures

More Space for Creativity

Seven colours are available for creating natural red aesthetics. Based on the colours of the Paste Opaques, which can be applied pure or mixed, there are no limits to your creativity with these materials. From bluish violet to light pink, you can achieve perfect red and white aesthetics.

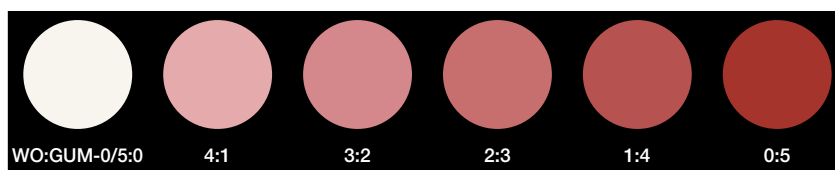
SHOFU UNIVERSAL PRE-OPAQUE	PreO			
SHOFU UNIVERSAL OPAQUE	GUM-o	Wo		
TRANSLUCENT	GUM-T			
CONCENTRATE	GUM-L	GUM-D	GUM-Or	
FLOWABLE COMPOSITE	F-GUM-Br	F-GUM-V	F-GUM-R	F-W

... More Natural

The Proper Base Colour Right from the Start

The Ceramage Gum Color system includes not only various colours available in two viscosities, but also two ready-to-use paste opaques in different colours.

By selectively mixing SHOFU Universal Opaque White and Pink (Gum-O), you can create a wide variety of intermediate shades as base colours for framework masking and subsequent layering.



Individual Accents with Gum Flowable or Ceramage UP

Gum Flowable and Ceramage UP allow you to easily achieve fine, individual colour nuances and accents. These pastes are more flowable than the standard Ceramage composites and can be mixed with each other. You can sculpt excellent interdental or raised alveolar areas.



Natural Aesthetics without any Compromise



The Shade Concept

The shades of the Ceramage system are logically matched and include a wide range of individual translucent and opaque effect materials, just like ceramic veneering systems. Four supplementary Ceramage Whitening shades allow you to reproduce lighter shades of bleached teeth, which were “impossible” to create until now.

Basic Shades

Shade	A1	A2	A3	A3.5	A4	B1	B2	B3	B4	C1	C2	C3	C4	D2	D3	D4
SHOFU UNIVERSAL PRE-OPAQUE	PreO															
SHOFU UNIVERSAL OPAQUE	A1O	A2O	A3O	A3.5O	A4O	B1O	B2O	B3O	B4O	C1O	C2O	C3O	C4O	D2O	D3O	D4O
CERVICAL	-	AC1	AC2	-	-	BC1	BC2	-	-	CC1	CC2	DC1	DC2	-	-	-
OPAQUE DENTIN	ODA1	ODA2	ODA3	ODA3.5	ODA4	ODB1	ODB2	ODB3	ODB4	ODC1	ODC2	ODC3	ODC4	ODD2	ODD3	ODD4
BODY	A1B	A2B	A3B	A3.5B	A4B	B1B	B2B	B3B	B4B	C1B	C2B	C3B	C4B	D2B	D3B	D4B
INCISAL	58	59	60	57	58	59	60	58	59	60	59	60	59	60	59	59

The basic shades correspond to the VITA® Classical shade system.

Whitening Shades

The four Ceramage Whitening shades W0 to W3 have been designed to meet the demands of numerous patients for composite veneers and restorations in bleach shades. The additional components needed for the use of Ceramage Whitening shades have been kept to a minimum.

Shade	W0	W1	W2	W3
SHOFU UNIVERSAL PRE-OPAQUE	PreO			
SHOFU UNIVERSAL OPAQUE	W0O	W1O	W2O	W3O
BODY	W0B	W1B	W2B	W3B
INCISAL	56	57	57	57



NCC – Natural Color Concept

The additional NCC shades are a logical extension of the V-Classical shades. Root-A (vivid A) shows a more intense chroma than A4. The Red Shift shades R2, R3 and R3.5 are based on the A-group, but slightly more reddish.

For example: R3 is a little “shift” more reddish than A3, with the same chroma.

Shade	rootA	R2	R3	R3.5
SHOFU UNIVERSAL PRE-OPAQUE	PreO			
SHOFU UNIVERSAL OPAQUE	rootA4	R2O	R3O	R3.5O
OPAQUE DENTIN	ODrootA	ODR2	ODR3	ODR3.5
BODY	rootA8	R2B	R3B	R3.5B
INCISAL	60	58	59	

Effect Shades

SHOFU UNIVERSAL OPAQUE	TM	BB	GD	WO	GUM-O	RU	VZ	VI	RU	PreO	
TRANSLUCENT	T	HVT	LVT	T-Glass	BG	GT	CT-A	CT-B	CT-R	GUM-T	
INCISAL	56	57	58	59	60	61					
CONCENTRATE	M	WE	OC	AM-Y	AM-R	AM-V	MY	MP	GUM-L	GUM-U	GUM-G
FLOWABLE COMPOSITE	F-T-Glass	F-59	F-ODA3	F-A3B	F-rootAB	F-Br	F-W	F-CT-A	F-BT		
	F-GUM-Br	F-GUM-V	F-GUM-R								

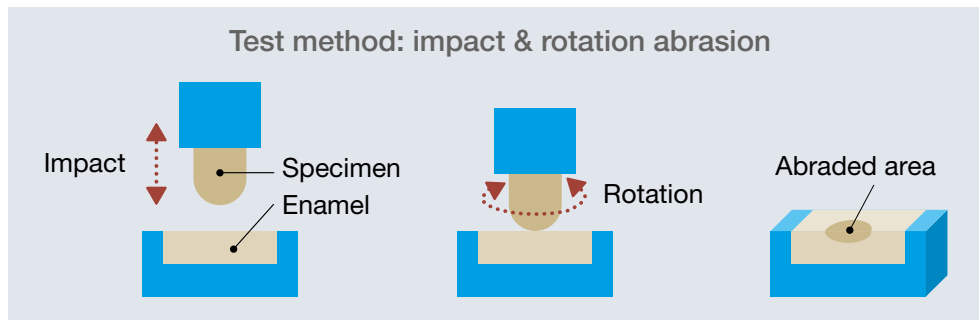
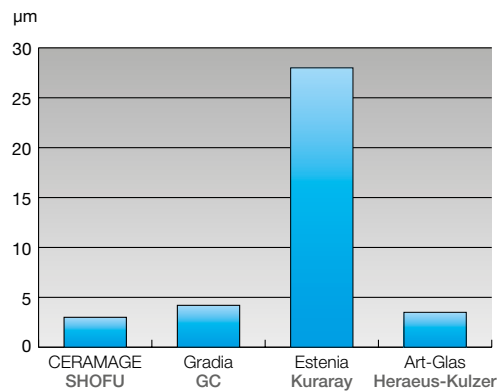


Abrasion-Resistant and Gentle on the Teeth

The material structure and the resulting homogeneous surface of Ceramage composite are extremely antagonist-friendly, for better resistance to loss of lustre, discolouration and plaque formation.

These abrasion properties ensure a very high patient comfort of restorations and dentures. A direct comparison after 10,000 abrasion cycles shows that Ceramage causes only minimal enamel reduction.

Abrasion of opposing enamel after 10,000 cycles



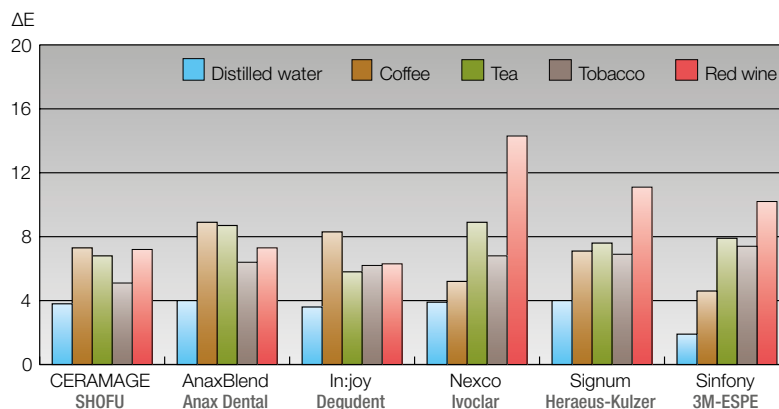
Source: R&D SHOFU INC., Japan, 2008

Durable Natural Appearance

Shade stability

Examination after 28-day storage in various media and subsequent cleaning with a hand toothbrush and Blend-a-med toothpaste for 2 minutes

($\Delta E < 3$ is visually almost imperceptible)



Source: Department of Dental Prosthetics and Materials Science, University of Jena, Germany, Dr A. Rzanny, 2013

The Easy Way to High Surface Gloss and Durability

Ceramage features very good polishability, ensuring homogeneous surfaces and, as a result, outstanding resistance to plaque formation. Its exceptional structure and its ceramic microfiller content of 73 % make surfaces smooth and durable.

CERAMAGE FINISHING & POLISHING KIT

The well-matched rotary instruments of this finishing and polishing kit, developed specifically for Ceramage, allow you to create high-quality surfaces in a very short time. Thanks to the long service life of the diamond-impregnated CompoMaster Coarse and CompoMaster polishers, even hard-to-reach occlusal or interproximal surfaces do not pose any problems.

PN 0333



DURA-POLISH

Dura-Polish alumina polishing paste helps you to quickly and easily smooth all surfaces of your Ceramage restorations. The homogeneous surfaces created are ideal for easy high-lustre polishing.

PN 0552

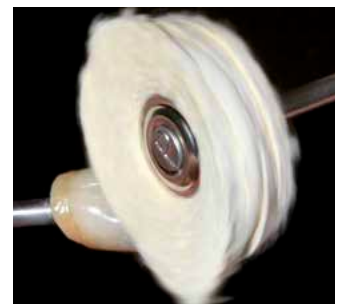


DURA-POLISH DIA

This diamond polishing paste features a very high content of filler particles whose structure and distribution are matched to the inorganic filler of Ceramage composite.

After prepolishing with Dura-Polish, all anatomical details can be quickly polished to a high lustre using Dura-Polish DIA and a felt wheel.

PN 0554



Order Information



CERAMAGE STANDARD SET

This set contains all the components needed to fabricate aesthetic restorations in the shades A1 to A4, B2, B3 and C3 in a practical organiser.

PN Y1806U



CERAMAGE INTRO SET

The efficient starter pack for the Ceramage technique

Shade: A2

PN Y1807U

Shade: A3

PN Y1808U



CERAMAGE GUM COLOR FULL SET

The highly versatile components of this set offer you unlimited options for the reconstruction of gingival tissues when producing high-quality telescopic and implant-supported restorations.

PN Y1804U

We would like to thank Ms Carla Gruber, PSK, Unterschleißheim, and Mr German Bär, MDT, St Augustin, Germany, for their friendly support and for providing their photographs.

* VITA is a registered trademark of VITA Zahnfabrik, Bad Säckingen, Germany.



SHOFU INC. 11 Kamitakamatsu-cho, Fukuine, Higashiyama-ku, Kyoto 605-0983, Japan
SHOFU DENTAL GmbH Am Brüll 17, 40878 Ratingen, Germany, www.shofu.de

SHOFU is a registered trademark of SHOFU INC. All other trademarks and registered trademarks are the property of their respective holders. SHOFU INC. reserves the right to change specifications without notice.